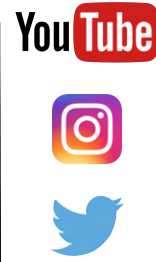


Establishing a Professional Learning Network for Japanese English Teachers

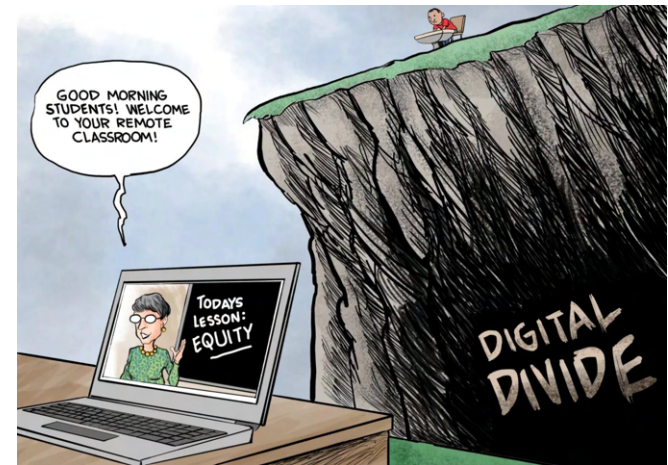
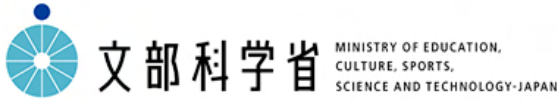
Teaching Challenges: What?



Digital Divide: In Japan?

MEXT (2020) survey - 1,231 local governments:

- 100% paper-based learning materials
- 29% digital resources
- 10% asynchronous instruction
- 5% live-streamed lessons



Isolation - "Egg carton profession" (Lortie, 1975)

21st Century Teacher Development: How?



COP - "... share a concern, a set of problems, or a passion about a topic, and who deepen their knowledge and expertise in this area by interacting on an ongoing basis." (Wenger et al., 2002)



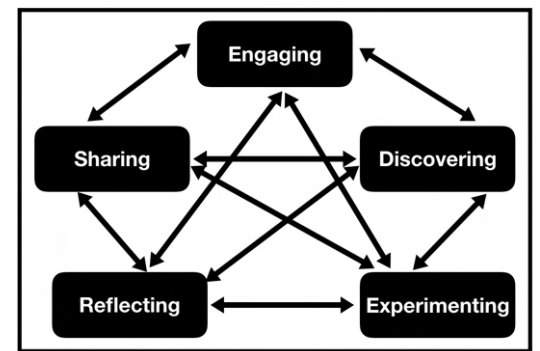
Self-initiated
communities
of practice



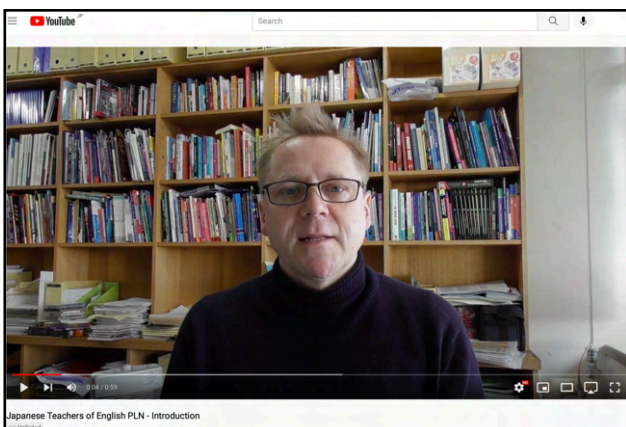
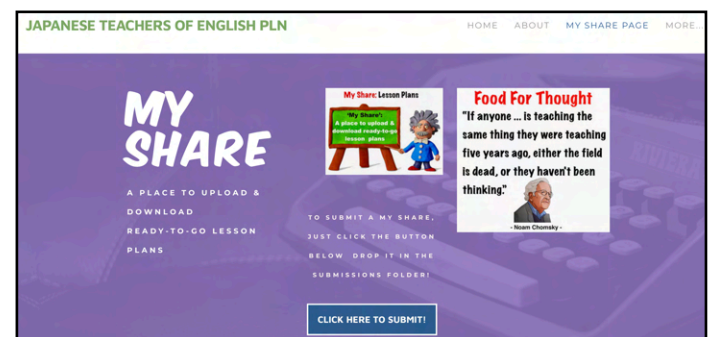
Professional Learning Network (PLN): What?



PLN - "... uniquely personalized, complex systems of interactions consisting of people, resources, and digital tools that support ongoing learning and professional growth." (Trust, Krutka, & Carpenter, 2016)



Japanese Teachers of English PLN: Research Project



- "Extended staffroom"
- Interpersonal relationships & emotional support
- Critical & reflective thinking
- Share lesson plans, student work, & ideas



JTOE-PLN- KAKENHI - 19K02986